

SENSORFACT

Smart Monitoring **for the Industry**

TEMPERATURE & HUMIDITY SENSOR INSTALLATION GUIDE



Temperature Sensor

Ambient Temperature Measurement:

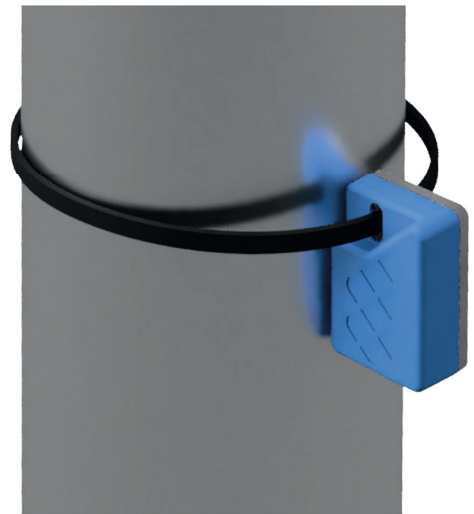
- Place the sensor in the surroundings using a tie wrap or sticky tape.
- Warning:** Do not cover the sensor ID on the back with sticky tape.

Surface Temperature Measurement:

- Attach the white mark on the sensor to the surface you want to measure (see picture).

Important Notes:

- Do not place the sensor outside.
- Suitable for temperatures between -40°C and 85°C.
- Can be used in humid and dusty conditions.



Temperature and Humidity Sensor

Ambient Temperature and Humidity Measurement:

- Place the sensor in the room you want to measure.
- Place the sensor in the surroundings using a tie wrap or sticky tape.
- Warning:** Do not cover the sensor ID on the back with sticky tape.

Important Notes:

- Do not place the sensor in humid or dusty conditions.
- Do not use the sensor outside.
- Ensure the room's humidity does not exceed 80% RH.



Bridge

Placement:

- Place the sensor in the room you want to measure.
- The bridge connects using an integrated SIM card.

Mounting Tips:

- Do not mount the bridge directly to the wall, use the mounting kit to improve signal strength (see picture).
- Ensure the connector of the bridge is facing down to improve signal strength (see picture).

